

PK

PK Syringe Pump

Specifications

Rate Range

5ml syringe	-	0.1 to 150ml/h
10ml syringe	-	0.1 to 300ml/h
20ml syringe	-	0.1 to 600ml/h
30ml syringe	-	0.1 to 900ml/h
50ml syringe	-	0.1 to 1200ml/h

Volume Infused

0.0 - 9990ml

Bolus Rate

5ml syringe	-	max bolus rate 150ml/h
10ml syringe	-	max bolus rate 300ml/h
20ml syringe	-	max bolus rate 600ml/h
30ml syringe	-	max bolus rate 900ml/h
50ml syringe	-	max bolus rate 1200ml/h

Battery Type

Rechargeable sealed NiMH, automatically charged when pump is connected to AC power

Battery Life is typically 4 hours from fully charged battery (5ml/h @ 20°C under normal conditions)

Recharge Time

2½ hours from discharge to 90% charge

Pumping Pressure Limits

Highest alarm level: 1000 mmHg (L-10) Factory Preset: 500 mmHg (nominal L-5)

Occlusion levels L-0 to L-10.

Max Purge Volume Range

100ml/h - 500ml/h (limited to size of syringe) limit 0.5 - 5.0ml

Accuracy (ml/h mode)

Volumetric +/- 2% (nominal)

Syringe Size/Type

5ml, 10ml, 20ml, 30ml or 50ml disposable syringe of type specified on pump

TCI Modes

PK/PD models* (Plasma only)

Diprivan Marsh
Remifentanil Minto
Sufentanil Gepts
(TIVA predictive modes for each)

Optional TCI Modes

PK/PD models*

Propofol Schnider (Plasma & Effect Site)
Alfentanil Maitre (Plasma & Effect Site)
Propofol Kataria (Plasma only)
Propofol Modified Marsh (Plasma & Effect Site)
Propofol Paedfusor
Remifentanil Minto (Effect Site only)
Sufentanil Gepts (Effect Site only)
(TIVA predictive modes for each)

*Consult local licensing, availability & prescribing information

Alarms

Audible alarm and display prompts with comprehensive protection for:

- Pressure limit exceeded
- Drive disengaged
- Infusion complete
- Purge/Bolus activated
- Limits for Dose
- Limits for Plasma Calculation
- Limits for Patient Weight
- Nurse Call Back
- Near end infusion
- Battery low
- AC power failure
- Syringe clamp

AC Power Requirements

115-230 VAC, 50/60Hz, 20VA (nominal)

Dimensions

310mm(w) x 121mm(h) x 200mm(d)

Weight (nominal)

2.7 Kg



Part of your complete infusion solution



Alaris® Products

Cardinal Health
Unit 3/167 Prospect Highway
Seven Hills NSW 2147, Australia
Tel: +61 2 9838 0255
Fax: +61 2 9674 4444

Cardinal Health
14B George Bourke Drive
Mt. Wellington, Auckland
New Zealand
Tel: +64 9 270 2420
Freephone: 0508 422734
Fax: +64 9 270 6285

Cardinal Health
Solbraaveien 10 A,
1383 ASKER, Norway
Tel: +47 66 98 76 00
Fax: +47 66 98 76 01

Cardinal Health
Unit 2 Oude Molen Business Park
Oude Molen Road, Ndabeni
Cape Town 7405, South Africa
Tel: +27 21 510 7562
Fax: +27 21 510 7567

Cardinal Health
Hammarbacken No. 4B
SE-191 24 SOLLENTUNA, Sweden
Tel: +46 8 544 43 200
Fax: +46 8 544 43 225

Cardinal Health
The Crescent, Jays Close, Basingstoke,
Hampshire RG22 4BS
United Kingdom
Tel: +44 (0)1256 388284
Freephone: 0800 917 8776
Fax: +44 (0)1256 330860

Alaris® and SmartSite®
trademarks are owned by
Cardinal Health, Inc. or one
of its subsidiaries.

©2006 Cardinal Health, Inc.
All rights reserved.
0000MS01991 Issue 4

Cardinal Health
International Headquarters
11, Route de la Vallée
1180 Rolle, Switzerland
Tel: +41 21 822 53 00
Fax: +41 21 822 53 01

www.cardinalhealth.com/alaris



Alaris® Products

Alaris® PK Syringe Pump





Introducing the Alaris® PK Syringe Pump

Now you can choose the latest Pharmacokinetic (PK) and Pharmacodynamic (PD) models that suit you and your patient best. In addition to the original Marsh model, the Alaris® PK Syringe Pump offers a choice of Plasma or Effect Site targeting capability (see drug prescribing information).

The Alaris® PK Syringe Pump user interface has been developed in cooperation with leading European anaesthesiologists. Set up is the same every time. Unnecessary features can be disabled. Only key information will be shown. All set up parameters are displayed on one screen.



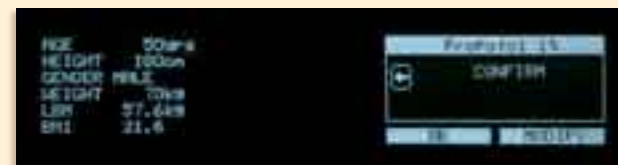
TCI & TIVA Modes

Choose a TCI model or one of up to 1000 normal drug protocols.



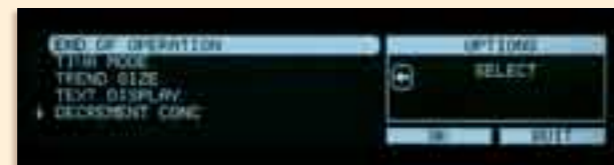
Infusion Status Display

A large display shows you all necessary information.



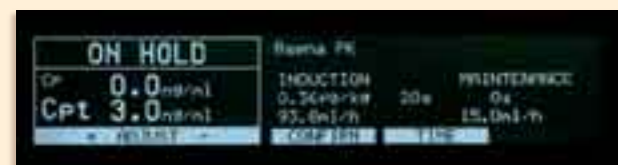
Patient Set Up Display

All patient parameters are set up in one screen.



Options Menu

Configurable options available through easily accessible menu screen.



Variable Induction Times

Adjust time of induction if needed.



TIVA with Predictions

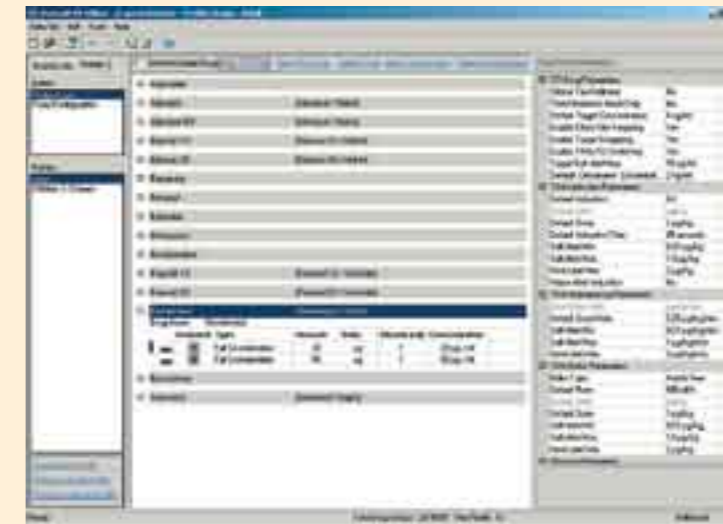
Easy to switch from TCI to TIVA mode and back.

Designed for the way you work



Alaris® PK Editor Software

Configure the pump the way you want using an innovative PC tool. Create profiles with your own name, type of operations and type of patient. Select from several TCI models for different drugs. Get predictions on plasma and effect concentrations. Create up to 1000 drug protocols in normal TIVA mode and set safety limits for almost any parameter. You're in charge.



System Integration Capability

When docked to an Alaris® Gateway Workstation, your complete infusion system has the capability to link to Patient Data Management Systems (PDMS) and Hospital Information Systems (HIS) through our open network architecture.



Please contact us for more information about the Alaris® PK Editor Software and System Integration capability.

PK Syringe Pump Safety Disposables

Refer to Disposables Catalogue for the full range of illustrated products

Y connectors	
MF2233E	Y connector 3 way • SmartSite® Valve 2 Back-check valves • Slide clamp • 0.6ml* • 10cm
20038E	Y connector 3 way • 3 SmartSite® Valves 3 Slide clamps • 0.3ml* • 11.5cm
20061E	Y connector 2 way • 2 SmartSite® Valves 2 Slide clamps • 1.8ml* • 18cm
20062E	Y connector 3 way • 3 SmartSite® Valves Back-check valve • 3 Slide clamps • 1.5ml* • 16cm
Y extension lines	
MF2292E	Y extension 3 way • SmartSite® Valve 4 Back-check-siphon valves • 2 Anti-siphon valves 3ml* • 200cm
MF2270	Y extension 3 way • 3 Back-check valves 2 Anti-siphon valves • 2 Roberts clamps 5.2ml* • 210cm
MF2290	Y extension 3 way • 3 Back-check valves 2 Anti-siphon valve • Roberts clamps • 4.3ml* • 209cm
MF2291	Y extension line • 2 Back-check valves Anti-siphon valve • Roberts clamp • 2.3ml* • 209cm
Extension lines	
MF2284	Stopcock extension Lipid resistant (amber) 7.2ml* • 100cm
MF2280E	Stopcock extension • SmartSite® Valve Lipid resistant (amber) • 1ml* • 10cm
MF1641	Extension line • Roberts clamp • Low sorbing Light resistant (amber) • 0.7ml* • 152cm
MF2260	Extension line • Anti-siphon valve • 0.63ml* • 200cm
MF2271	Extension line • 2 Back-check valves Anti-siphon valve • Roberts clamp • 3.0ml* • 210cm
MF2293	Extension line • Back-check valve • 0.9ml* • 14cm
30262E-0006	Extension line • 2 SmartSite® Y Valves 2 Roberts clamps • 6ml* • 102cm
G40215	Extension line • Light resistant (amber) • 1.2ml* • 150cm
G40615	Extension line • Low sorbing • 1.5ml* • 150cm
G40720	Extension line • Roberts clamp • Low sorbing 1.5ml* • 200cm
Accessories	
MF1594E	Dispensing pin • SmartSite® Valve 0.2µm hydrophobic filter • 1ml* • 6.5cm
2000E	SmartSite® Valve • 0.1ml* • 2.5cm
2203E	SmartSite® Valve vial access device (13mm vials) 0.09ml* • 3.3cm
2205E	SmartSite® Valve vial access device (20mm vials) 0.09ml* • 3.7cm
2300E	Bag spike • Unvented • SmartSite® Valve 0.46ml* • 8.33cm
2309E	Bag spike • Unvented • SmartSite® Valve Backcheck valve • 0.86ml* • 12.5cm

* Priming volume
Illustrations are only to be used
as a guide and do not necessarily
depict a true representation
of the product.

